

Andre Landon AIA

Design Director / Principal



andre.landon@edi-international.com
713 375 1448
edi-international.com

ABOUT

As Design Director and Principal of EDI, Andre leads the design process on a variety of luxury hotels, historical renovations, boutique style hotels, restaurants, high-rise condwominiums and country club projects. Recognized as an industry leader, Andre has the uncanny ability to ensure that a project's exterior and interior work harmoniously to ultimately create memorable user experiences.

Andre devotes his time to meeting the needs of his clients which include Wyndham, Marriott, Hilton, Best Western, InterContinental Hotels Group and others. Andre is responsible for the projects' overall design objectives including image, quality and budget. Whether working with a dynamic team or as a team leader, Andre exercises his special talent as a gifted artist to reach people's imagination using real world materials, incorporating them into workable architectural and interior design solutions that meet budget objectives and constraints. Andre's broad professional experience has included extensive work and travel throughout the USA and Pacific Rim.

PROJECT EXPERIENCE

ACME Hotel Company	Chicago, IL
Best Western GLō	International Prototype
Best Western Vīb	International Prototype
Carlton Woods	The Woodlands, TX
Crowne Plaza Riverwalk	San Antonio, TX
Crowne Plaza Tampa-Westshore	Tampa, FL
Courtyard by Marriott Country Club Plaza	Kansas City, KS
dana hotel and spa	Chicago, IL
DoubleTree Hotel	Bay City, MI
Hilton Daytona Beach Oceanfront Resort	Daytona Beach, FL
Hilton Savannah DeSoto	Savannah, GA
Holiday Inn Laurel West	Laurel, MD
Houston Country Club	Houston, TX
Inter-Continental Hotel Horton Plaza	San Diego, CA
JW Marriott	Jakarta, Indonesia
King's Centre Development Hotel	Singapore
Luxury Timeshare & Resort (Confidential Client)	Orlando, FL
Madison Hotel	Memphis, TN
Magnolia Bend	Orlando, FL
Marriott Dallas / Plano Legacy Town Center	Plano, TX
Park Hyatt Hotel	Luanda, Angola
Privatized Army Lodging	Joint Base San Antonio, TX
Radisson BLU	Luanda, Angola
Silverado Country Club and Resort	Napa, CA
The Mandarin Hotel	Singapore
The River Oaks	Houston, TX
Tierra Verde Residence Inn by Marriott	Tierra Verde, FL
Treehouse Villas	Orlando, FL
Wyndham Grand Riverfront	Chicago, IL

EDUCATION

- University of Texas at Arlington
- Master of Architecture with Honors
 - Bachelor of Science in Architecture

AFFILIATIONS

- American Institute of Architects
- National Council of Architectural Registration Boards
- Texas Society of Architects

TENURE

- EDI Since 2003
- 24 Years of Previous Experience

THE RIVER OAKS

Client: Arel Capital

Originally built in the 1960s and known as River Oaks Luxury Apartments, “The River Oaks” is Houston’s premier redevelopment project, combining the best of both townhome and high-rise worlds.

Units run the gamut from 1 to 3 bedroom Tower Residences ranging from 1,432 to 5,406 SF; 3 bedroom Garden Residences range from 3,199 to 4,107 SF; and 3 bedroom Penthouses range from

6,541 to 13,229 SF.

Amenities include a fitness facility, massage room and yoga studio, 2 resort style swimming pools, a chef’s kitchen, a library and sitting room with ground floor garden views, landscaped terraced gardens, a dog park and dog grooming spa, a private indoor dining room and catering kitchen and a party room.



Photos © Eric Laignel

ARE Adaptive Reuse	MF Multi-Family	TX Houston	19 Stories	83 Total Luxury Multi-Family Units
78 Condominium Units	5 Townhome Units	451,116 Total SF	Complete Winter 2018	A Architecture



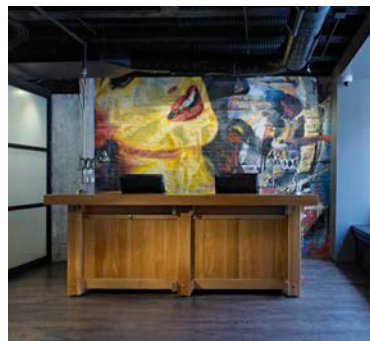
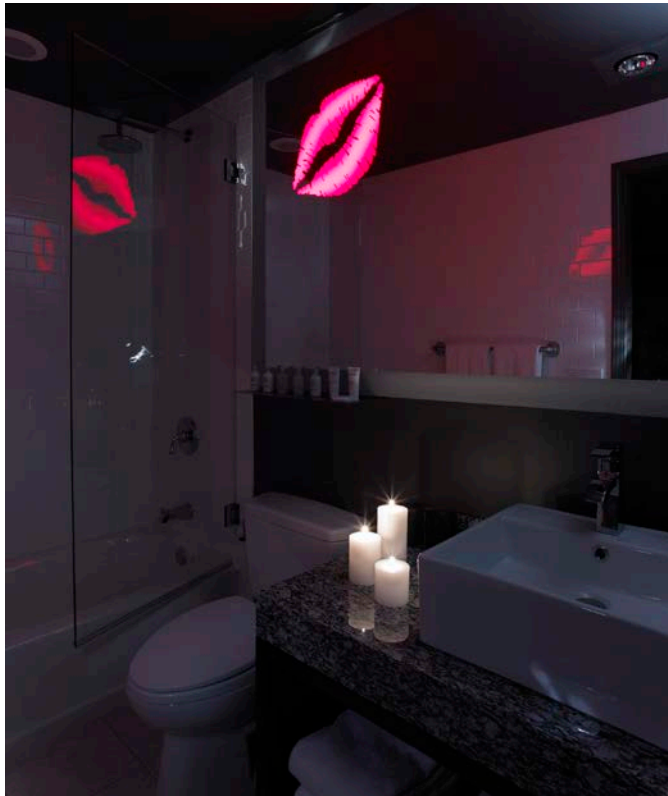
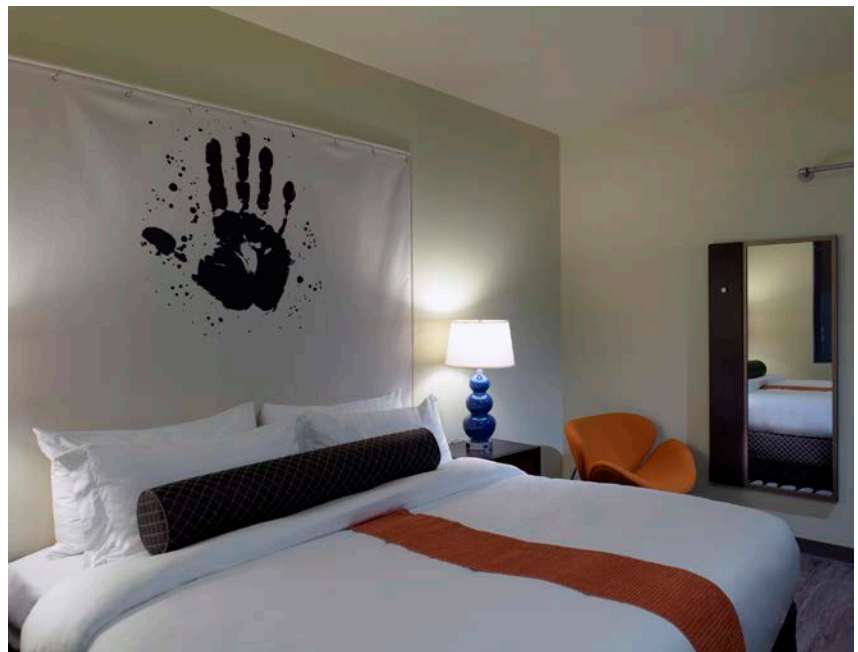
ACME HOTEL *Client: Neighborhood Development Corp*

This boutique hotel underwent a renovation / conversion from a bland branded product to an independent, conceived as a lifestyle hotel for GenX and beyond. Originally intended for a budget market, it has acquired great popularity and higher than expected rates. Sought out by youthful successful travelers with an eye for design who appreciate the high-tech vibe, the hotel has become the destination for a relaxed, modern lifestyle experience, filling a niche between luxury-lifestyle and mid-market space. Amenities include an open Lobby, Breakfast Bar and 400 SF Fitness Room.



H Hospitality	CNV Conversion	130 Key Boutique Hotel	Complete 2015
-------------------------	--------------------------	-------------------------------------	-------------------------

R Renovation	IL Chicago	4 Room Types	ID Interior Design
------------------------	----------------------	------------------------	------------------------------



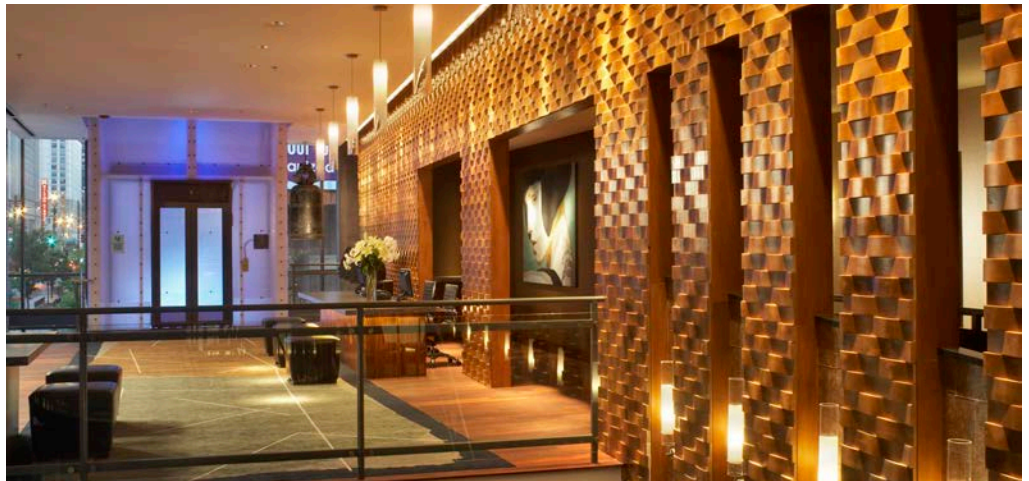
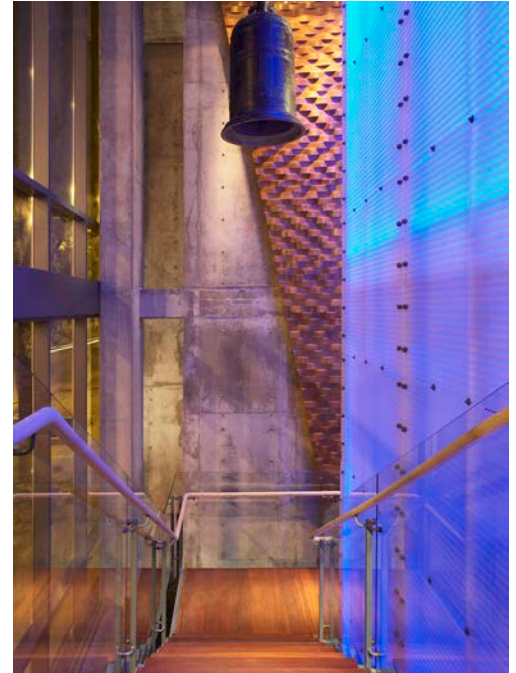
Photos © Anthony May Photography

DANA HOTEL & SPA *Client: Neighborhood Development Crop*

The dana hotel & spa provides an urban destination catering to the discriminating guest seeking recognition, service, modern style, and sophisticated amenities in an unpretentious restrained setting.

To accomplish full service amenities within a small footprint, the Lobby, Bar and Restaurant were conceived as one flowing space connected by stairs, ramps and a glowing elevator allowing guests to move through individual spaces but still have the sense of one coherent theme.

Interior finishes and color schemes were conceived based on their visual and physical texture rather than color. In contrast to the interior architecture, bright strong colors in the fabrics are used in limited quantities to allow the materials to make the special statement. The textured waving wood wall binds the spaces together and gives the smaller scaled elements of design and people a backdrop opened to the street..



H
Hospitality

216
Key Boutique
Hotel & Spa

Complete

IL
Chicago

26
Stories

ID
Interior Design



THE EGYPTIAN (LAS PALMAS)

Client: Rebel Hospitality

This small boutique hotel underwent a renovation that included guestrooms, pool, lobby and an exterior patio with F&B component, stage and movie screens.

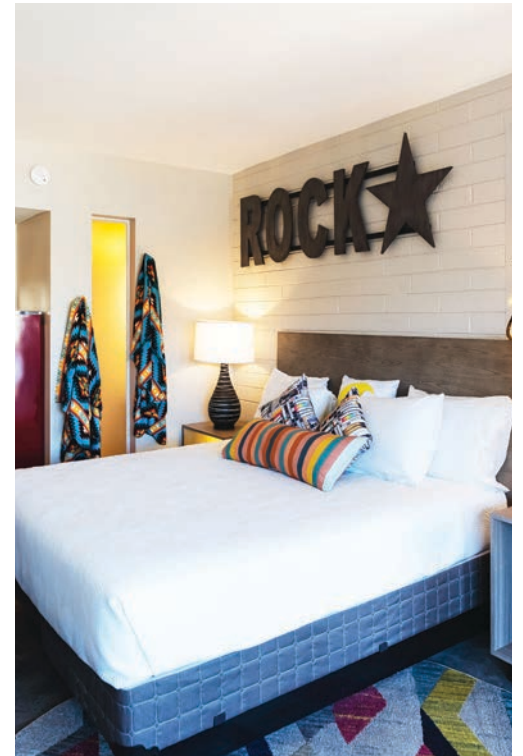


Photos Courtesy of Rebel Hospitality

H Hospitality	CNV Conversion	R Renovation
-------------------------	--------------------------	------------------------

AZ Phoenix	48 Keys
----------------------	-------------------

Complete 2022	ID Interior Design
-------------------------	------------------------------

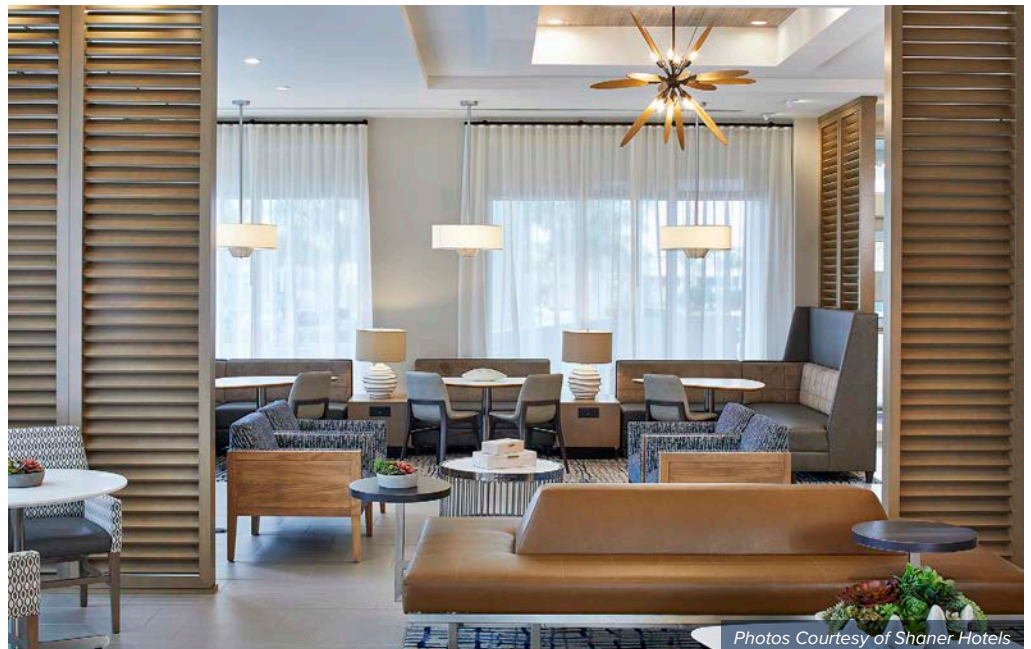


RESIDENCE INN BY MARRIOTT

ST. PETERSBURG TIERRA VERDE *Client: Tierra Verde Hospitality, LLC*

This new build hotel is an extended stay product. The modern apartment style suites include ergonomic workspace, full kitchens and separate living areas. Amenities include social, gathering & dining areas, and a multi-purpose meeting room, all with poolside views; Sundry Convenience Store; fitness; and a rooftop bar / lounge.

H Hospitality	FL Tierra Verde	95 Keys
6 Stories	Complete 2021	ID Interior Design



Photos Courtesy of Shaner Hotels

CROWNE PLAZA TAMPA - WESTSHORE

Client: MHI Hospitality

This major conversion and expansion hotel project included a new ballroom annex, new concierge level with a lounge and an expansion for a restaurant lease.



H Hospitality	CNV Conversion	FL Tampa
178 Standard Rooms	44 Cabana Suites	160,000 SF Total
Complete	A Architecture	ID Interior Design



HERITAGE HOTEL

Client: Heritage Hotels Marble Falls, LLC



H Hospitality	R Renovation	TX Marble Falls	65 Keys
Design Phase		A Architecture	ID Interior Design

SHERATON LOUISVILLE RIVERSIDE HOTEL

Client: MHI Hospitality

This hotel was the conversion and expansion of existing property. An Anchor Hotel for the Entertainment District, amenities include a lobby and pool.



H
Hospitality

IN
Jeffersonville

181 Keys

Complete
2008

A
Architecture

ID
Interior Design



Photos Courtesy of MHI Hospitality

THE MADISON HOTEL

*Client: Neighborhood
Development Corp.*

Conversion of an Historic Office
Building.



H Hospitality	HL Hotel	ARE Adaptive Reuse
CNV Conversion	TN Memphis	110 Keys
Complete 2006	ID Interior Design	



CHAMPIONS GOLF CLUB

Client: Champions Golf Club



Photos © G. Lyon Photography, Inc



CC
Country Club

RE
Renovation

TX
Houston

25,239
SF

Complete
2022

ID
Interior Design

EAST COURSE CLUBHOUSE

Client: The Woodlands Development Company



Photos © Richard L. Muniz Photography

H
Hospitality

CC
Country
Club

TX
The
Woodlands

9,236
SF Clubhouse

1,005
SF Cart Barn

Complete
2008

A
Architecture

ID
Interior Design

FAZIO CLUBHOUSE

Client: The Woodlands Development Company



H
Hospitality

CC
Country
Club

TX
The
Woodlands

17,747
SF Clubhouse

7,788
SF Cart Barn

Complete
2008

A
Architecture

ID
Interior Design

OAKS OF TIMBER- GROVE

Client: Arel Capital

Clubhouse Renovation including
Leasing Office, Lounge, Media
Room, Fitness Center and Exterior
Facade.



H
Hospitality

CF
Community
Facility

RE
Renovation

TX
Houston

Complete

A
Architecture

ID
Interior Design

SILVERADO COUNTRY CLUB & RESORT

Client: Silverado Country Club & Resort



Photo © Dennis Anderson Photography

H
Hospitality

CC
Country Club

14,385
SF Private Country Club

CA
Napa

Complete
2005

A
Architecture

ID
Interior Design

AMERICAN FIRST NATIONAL BANK

*Client: American First
National Bank*

This international bank headquarters is based on the ancient Chinese practice of Feng Shui which harmoniously balances surroundings, buildings and environments. The shape of the building floor plan was derived from the concept of yin/yang for a balance with the universe.

The convex curve, according to Feng Shui practices, deflects the negative energy around the building. The opposing curve of the fountain is seen as channeling positive energy to the bank. And the center slice in the building is symbolic of the number one.



Photo © Aker / Zvonkovic



CO
Commercial

OB
Office
Building

TX
Houston

12
Stories

599
Space Parking
Garage

A
Architecture

211,587
SF

Complete

ID
Interior Design



www.edi-international.com

TORRES ATLÁNTICO

Client: Atlantic Towers, Ltd.

Sustainable Class A office building designed as the regional headquarters for three major oil companies (Sonangol, Esso and BP).



EC
Expatriate
Community

AO
Luanda

18
Story Office
Tower

15
Story Residential
Tower

5
Story Parking
Garage

3
Major Oil
Company's
Headquarters

Complete
September 2009

A
Architecture

ID
Interior Design

TOTAL E&P ANGOLA

Client: Total E&P Angola



Photos © Kostadin Luchansky

OB
Office
Building

CO
Commercial

AO
Luanda

16
Story Office
Tower

37,213
Square Meters

306
Parking Spaces
on 8 Levels

Complete
2013

A
Architecture

ID
Interior Design

NOBLE ENERGY CAMPUS AT MALABO DOS

Client: Noble Energy

This Expatriate Community includes a 6-Story, 5,982 Square Meter Office and Residential Building, an Employee Cafeteria, Conference Room, Pool and Tennis Court.



EC
Expatriate
Community

GQ
Malabo Dos

6
Stories

5,982
Square Meters

Complete
2013

A
Architecture

ID
Interior Design



Images Courtesy of Noble Energy